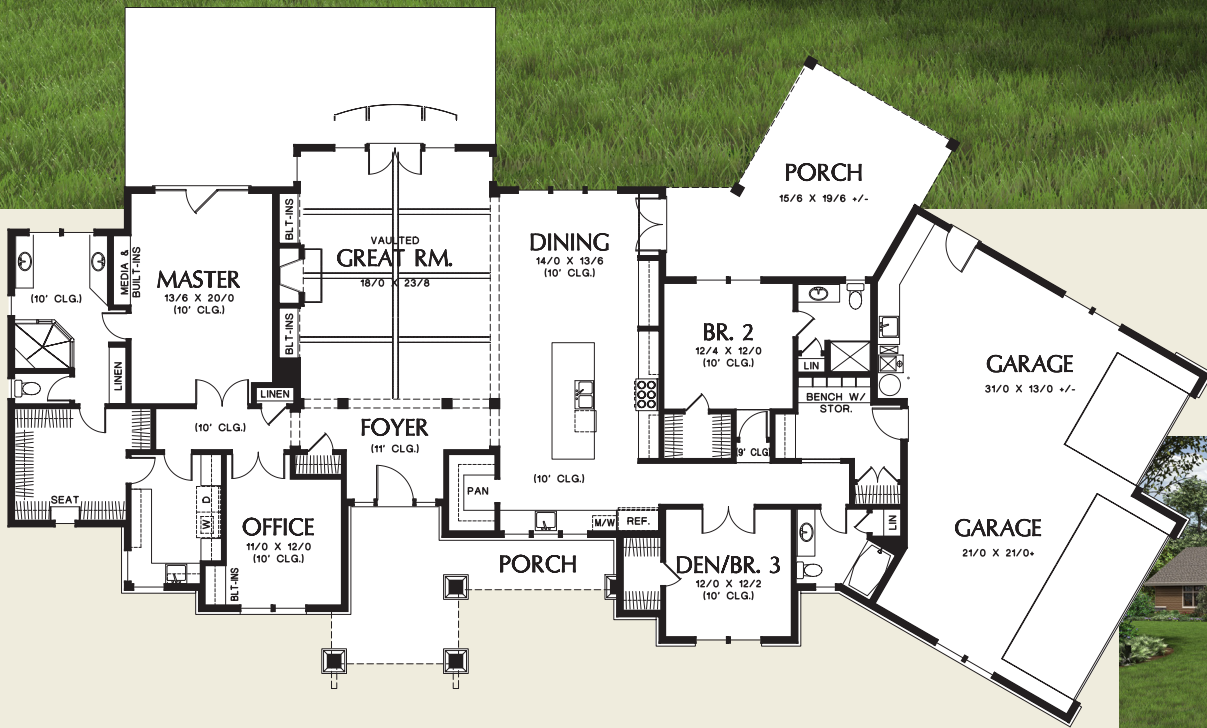




# The Westfall Quail Homes



Main Floor 2910 Sq. Ft

**Total Area 2910 Sq. Ft**

**Width** 113'-4"  
**Depth** 62'-8"

**Height** (Main Flr to Peak): 23'-10"  
(to Midpt of Roof): 16'-9"



ALAN MASCORD DESIGN ASSOCIATES, INC  
2187 NW Reed St, Suite 100, Portland, OR 97210 · 503.225.9161

[www.mascord.com](http://www.mascord.com)

Copyright © 2013 Alan Mascord Design Associates, Inc.  
All rights reserved.